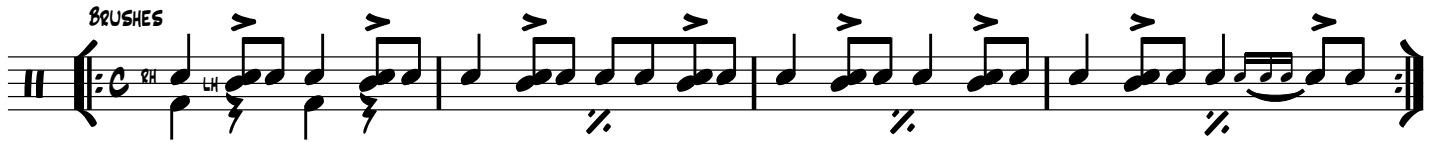


1960'S ROCK GROOVES PART 1 (60-65)

DRUMFILLOSOPHY.COM

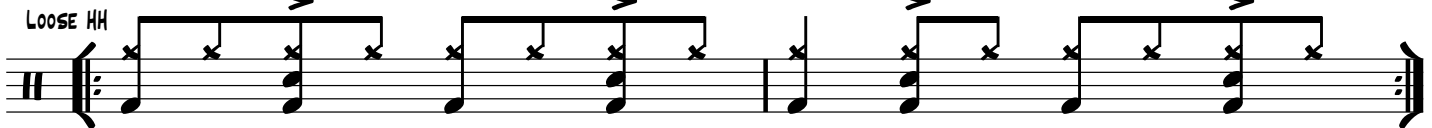
1 "SHOP AROUND"/THE MIRACLES/1960 DRUMMER: BENNY BENJAMIN {POP/SOUL}

SIM. GROOVE THROUGHOUT



2 "THE TWIST"/CHUBBY CHECKER/1960 DRUMMER: ELLIS TOLLIN {ROCK AND ROLL}

MAIN GROOVE SLIGHTLY SHUFFLED



3 "I CAN'T HELP FALLING IN LOVE"/ELVIS PRESLEY/1961 DRUMMER: D.J. FONTANA {ROCK AND ROLL}

SIM. GROOVE THROUGHOUT

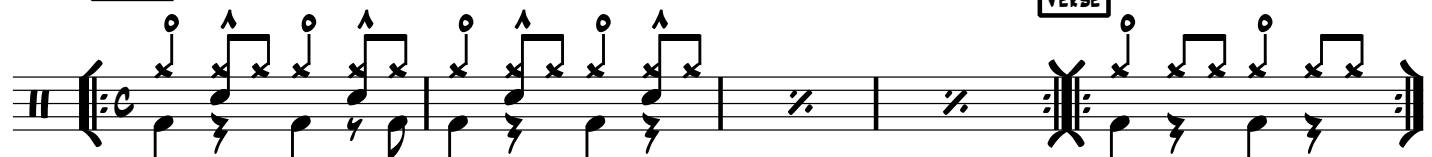
FILL AT 2:14 ISH



4 "HIT THE ROAD JACK"/RAY CHARLES/1961 DRUMMER: BRUNO CARR {ROCK AND ROLL}

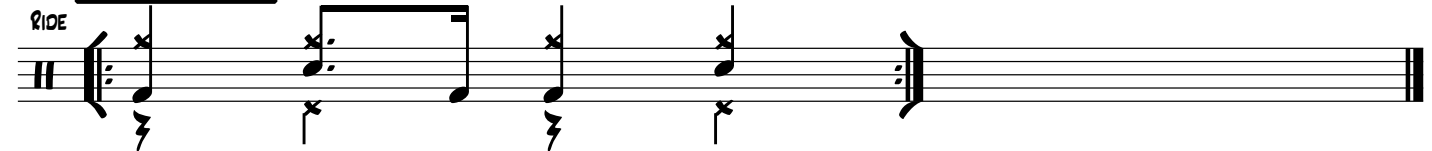
CHORUS

VERSE



5 "GREEN ONIONS"/BOOKER T. & THE MG'S/1962 DRUMMER: AL JACKSON JR. {INSTRUMENTAL ROCK}

GROOVE THROUGHOUT



6 "DO YOU LOVE ME"/THE CONTOURS/1962 DRUMMER: BENNY BENJAMIN {R&B}

INTRO FILL

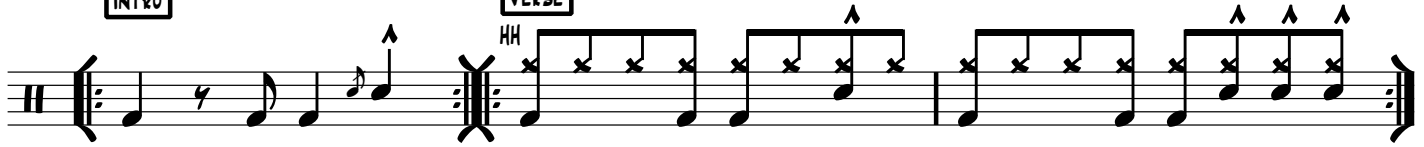
SIM. GROOVE THROUGHOUT



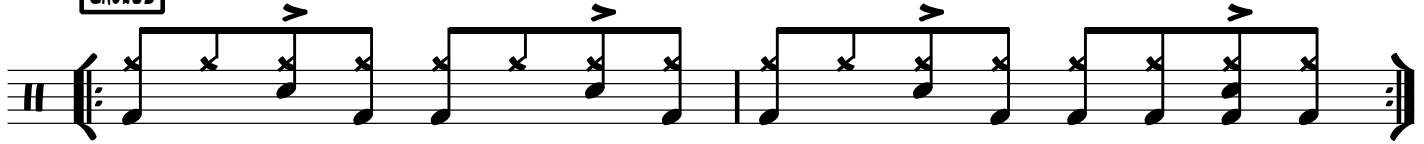
7 "BE MY BABY"/THE RONETTES/1962 DRUMMER: HAL BLAINE {POP}

INTRO

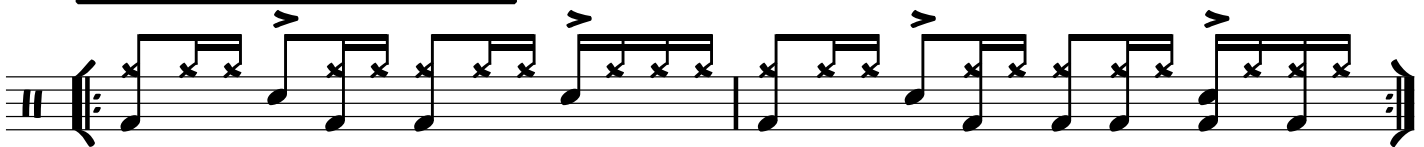
VERSE



CHORUS



CHORUS HH VARIATION TO COVER CASTINET PART

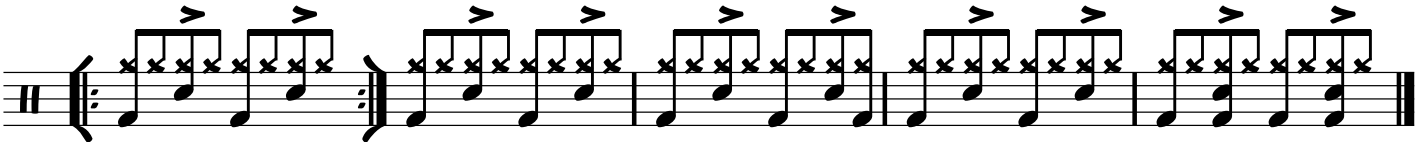


8 "I SAW HER STANDING THERE"/THE BEATLES/1963 DRUMMER: RINGO STARR {ROCK & ROLL}

MAIN GROOVE THROUGHOUT

CHORUS

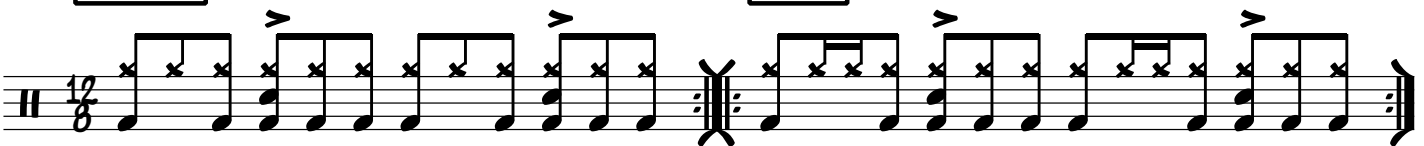
"SHE WOULDN'T DANCE..."



9 "HOUSE OF THE RISING SUN"/THE ANIMALS/1964 DRUMMER: JOHN STEEL {BLUES ROCK}

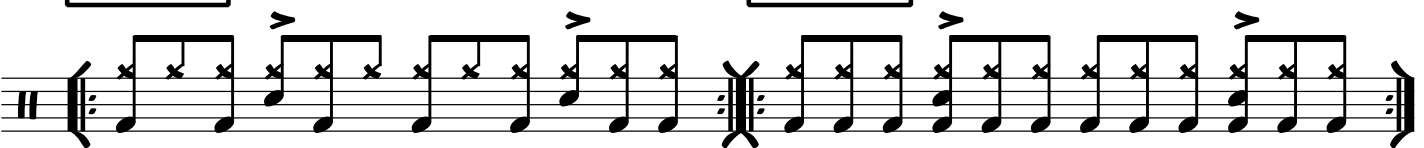
MAIN GROOVE

VARIATION



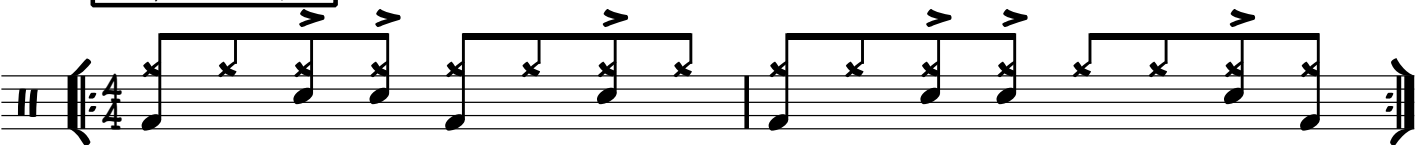
SOFTER SECTION

LOUDER SECTION





10 "TWIST AND SHOUT"/THE BEATLES/1964 DRUMMER: RINGO STARR {ROCK & ROLL}

SIM. GROOVE THROUGHOUT



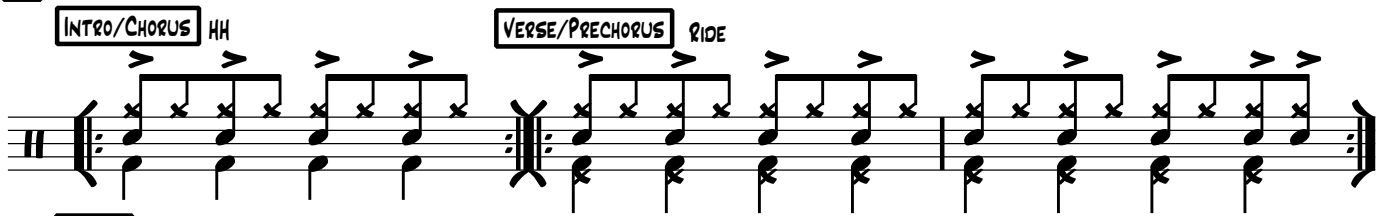
11 "CAN'T BUY ME LOVE"/THE BEATLES/1964 DRUMMER: RINGO STARR [ROCK & ROLL]

INTRO/OUTRO  VERSE/CHORUS LOOSISH HH

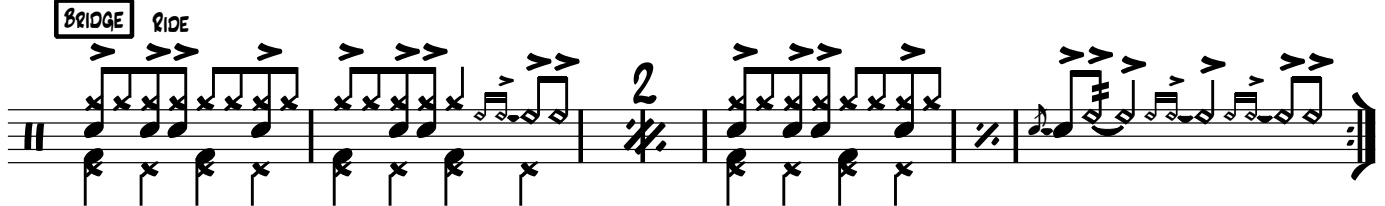


12 "OH, PRETTY WOMAN"/ROY ORBISON/1964 DRUMMER: BUDDY HARMON [ROCK & ROLL]

INTRO/CHORUS HH VERSE/PRECHORUS RIDE

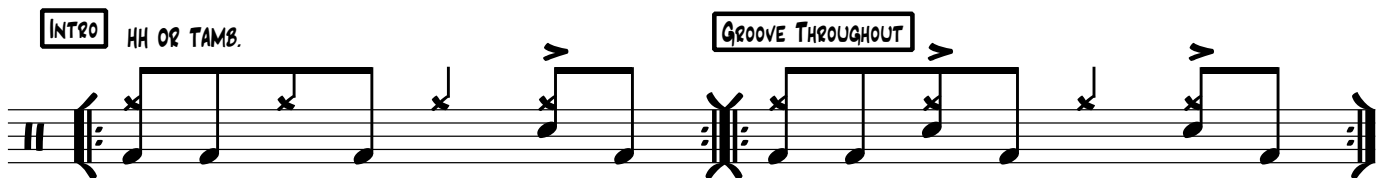


BRIDGE RIDE



13 "YOU REALLY GOT ME"/THE KINKS/1964 DRUMMER: BOBBY GRAHAM [ROCK]

INTRO HH OR TAMB. GROOVE THROUGHOUT



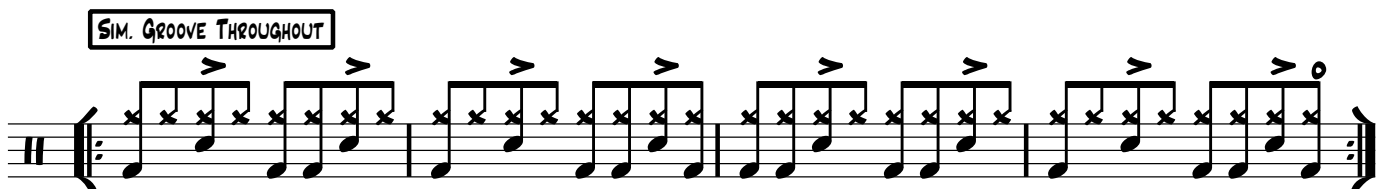
14 "I GET AROUND"/THE BEACH BOYS/1964 DRUMMER: DENNIS WILSON; PERCUSSION: HAL BLAINE [SURF ROCK]

CHORUS/SOLO RIDE VERSE



15 "RESPECT"/ARETHA FRANKLIN/1965 DRUMMER: ROGER HAWKINS [SOUL]

SIM. GROOVE THROUGHOUT



16 "CALIFORNIA DREAMIN'"/THE MAMAS AND THE PAPAS/1965 DRUMMER: HAL BLAINE {POP}

VERSE CHORUS/FLUTE SOLO

17 "MY GENERATION"/THE WHO/1965 DRUMMER: KEITH MOON {ROCK}

INTRO QUASI SHUFFLE RIDE VERSE CHORUS CRASH RIDE FILL 3

18 "LIKE A ROLLING STONE"/BOB DYLAN/1965 DRUMMER: BOBBY GREGG {FOLK ROCK}

GROOVE THROUGHOUT RIDE TAMB FILL INTO CHORUS

19 "THE SOUNDS OF SILENCE"/SIMON AND GARFUNKEL/1965 DRUMMER: BOBBY GREGG {FOLK ROCK}

SIM. GROOVE THROUGHOUT RIDE TYPICAL FILL (SWUNG)

20 "(I CAN'T GET NO) SATISFACTION"/THE ROLLING STONES/1965 DRUMMER: CHARLIE WATTS {ROCK}

GROOVE THROUGHOUT TAMB

21 "TURN! TURN! TURN!"/THE BYRDS/1965 DRUMMER: MICHAEL CLARKE {FOLK ROCK}

INTRO VERSE ETC. CHORUS RIDE BELL

22 "THESE BOOTS ARE MADE FOR WALKIN'"/NANCY SINATRA/1965 DRUMMER: DONALD "RICHIE" FROST {POP}

LEAD IN TO VERSES

VERSE

TAMB.

CHORUS

OUTRO

RIDE

The musical notation for 'These Boots Are Made for Walkin'' is written on a single staff. It begins with a 'LEAD IN TO VERSES' section, followed by a 'VERSE' section marked with a 'TAMB.' (tambourine) symbol. The 'CHORUS' section follows, and the piece concludes with an 'OUTRO' section marked with a 'RIDE' (ride cymbal) symbol. The notation includes various rhythmic values and dynamic markings like accents and slurs.

23 "I GOT YOU (I FEEL GOOD)"/JAMES BROWN/1965 DRUMMER: MELVIN PARKER {SOUL/FUNK}

VERSE

HH

VOCAL BREAK

SAX BREAK

BELL

BRIDGE

HH

5X

FILL

The musical notation for 'I Got You (I Feel Good)' is written on three staves. The first staff contains the 'VERSE' section, marked with 'HH' (hi-hat). The second staff features a 'VOCAL BREAK' section, followed by a 'SAX BREAK' section marked with a 'BELL' (bell) symbol. The third staff contains the 'BRIDGE' section, marked with 'HH', and ends with a 'FILL' section. The notation includes various rhythmic values and dynamic markings.

24 "STOP! IN THE NAME OF LOVE"/THE SUPREMES/1965 DRUMMER: BENNY BENJAMIN {R&B/SOUL}

INTRO

HH (LAZY/SOFT ON &'S)

VERSE

CHORUS

The musical notation for 'Stop! In the Name of Love' is written on two staves. The first staff contains the 'INTRO' section, marked with 'HH (LAZY/SOFT ON &'S)' (hi-hat). The second staff contains the 'VERSE' and 'CHORUS' sections. The notation includes various rhythmic values and dynamic markings.

25 "PAPA'S GOT A BRAND NEW BAG"/JAMES BROWN 1965 DRUMMER: MELVIN PARKER {SOUL/FUNK}

VERSE 1 & 2

VARIATIONS

The musical notation for 'Papa's Got a Brand New Bag' is written on a single staff. It begins with the 'VERSE 1 & 2' section, followed by the 'VARIATIONS' section. The notation includes various rhythmic values and dynamic markings.

1960's ROCK GROOVES PART 1 (pg.6)

"DAY TRIPPER"/THE BEATLES/1965 DRUMMER: RINGO STARR [ROCK & ROLL]

VERSE CHORUS GUITAR BREAKDOWN

HH

The first staff of music is divided into three sections: VERSE, CHORUS, and GUITAR BREAKDOWN. The VERSE section starts with a double bar line and repeat dots, followed by a series of eighth notes with 'x' marks. The CHORUS section also starts with a double bar line and repeat dots, followed by a series of eighth notes with 'x' marks. The GUITAR BREAKDOWN section starts with a double bar line and repeat dots, followed by a series of eighth notes with 'x' marks. The staff is labeled 'HH' at the beginning.

ADD VOCALS (LOOSE HH!)

The second staff of music is labeled 'ADD VOCALS (LOOSE HH!)'. It starts with a double bar line and repeat dots, followed by a series of eighth notes with 'x' marks. The staff is divided into two sections by a double bar line.

3x's

The third staff of music is labeled '3x's'. It starts with a double bar line and repeat dots, followed by a series of eighth notes with 'x' marks. The staff is divided into two sections by a double bar line.