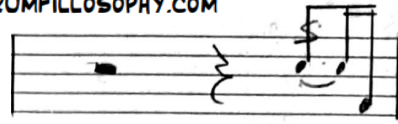


Drummer: Vinnie Colaiuta  
Artist: John Patitucci  
Album: Sketchbook

DRUMFILLOSOPHY.COM

# Scophile



The image displays a handwritten musical score for a drum solo, organized into 12 horizontal staves. The notation is dense and includes various rhythmic symbols such as eighth notes, sixteenth notes, and triplets. Above the notes, there are numerous 'x' marks, which typically represent cymbal hits or specific drum sounds. The score is annotated with several 'etc...' (et cetera) markings, indicating that the patterns are to be repeated. Dynamic markings like '>' (accent) and '>>' (strong accent) are used throughout. Some staves feature numerical markings (e.g., 6, 3, 6) above the notes, possibly indicating fingerings or specific rhythmic groupings. The notation is written in black ink on a white background, with some corrections and scribbles visible, particularly in the lower staves.

x-hat

etz.

2:15

The image displays a handwritten musical score for a piece titled "Scofile pg. 2". The score is written on ten staves, each consisting of a grand staff (treble and bass clefs). The notation is complex, featuring a variety of rhythmic patterns, including eighth and sixteenth notes, rests, and beams. Above many notes, there are 'x' marks, which are annotated as "x-hat" in the top left corner. Some notes are marked with accents (>) or slurs. The word "etz." is written below the first staff. A time signature of "2:15" is visible on the left side of the eighth staff. The handwriting is in black ink on a light-colored background.

Handwritten musical notation on a single staff. The notation includes various note values (quarter, eighth, and sixteenth notes), rests, and dynamic markings such as accents (>) and slurs. The piece begins with a treble clef and a key signature of one flat.

2:37

Handwritten musical notation on a single staff, continuing the piece. It features similar note values and markings as the first staff, with a time signature of 2:37 written to the left.

2:44

Handwritten musical notation on a single staff, continuing the piece. It features similar note values and markings as the previous staves, with a time signature of 2:44 written to the left.

A single staff of musical notation that is mostly empty, with only a few notes at the beginning, possibly indicating a rest or a specific instruction.